

WL-13SS030 DC SPUR GEAR MOTOR

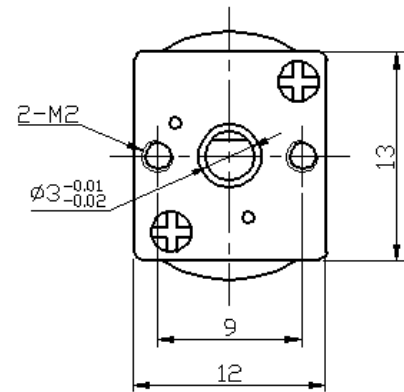
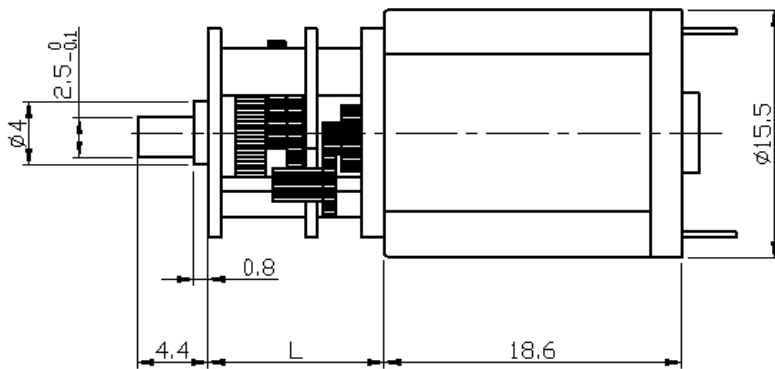
基本电压/Main voltage : 3VDC、6VDC、12VDC

典型应用/Typical applications :

仪器仪表、数码产品、自动门锁、医疗器械、安防监控

Instrument, Digital product, Automatic door-lock,

Medical equipment, Security monitoring



Gearbox Data :

Number of stages	2	4	5
Reduction ratio	3、7、10	16、17、20、30、35 50、63、70、86	115、150、210、250、360
Gearbox length "L"mm	11	11	11
Breaking torque(kgf.cm)	0.6	0.9	2
Gearbox efficiency	81%	65%	59%

Driving Motor Data :

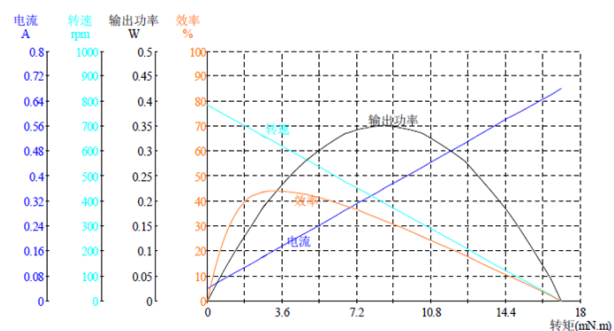
Motor model	Rated Volt.	No load		Load				Stall	
		Current	Speed	Current	Speed	Torque	Output power	Torque	Current
	V	mA	r/min	mA	r/min	gf.cm	W	gf.cm	mA
WL-030-003-8000	3	≤55	8000	≤250	6000	4	0.2	≥16	≥500
WL-030-003-10500	3	≤80	10500	≤300	7200	5	0.4	≥20	≥750
WL-030-006-8000	6	≤30	8000	≤120	5000	4	0.2	≥16	≥150
WL-030-006-10500	6	≤40	10500	≤160	7000	5	0.4	≥20	≥400

Geared Motor Samples Data :

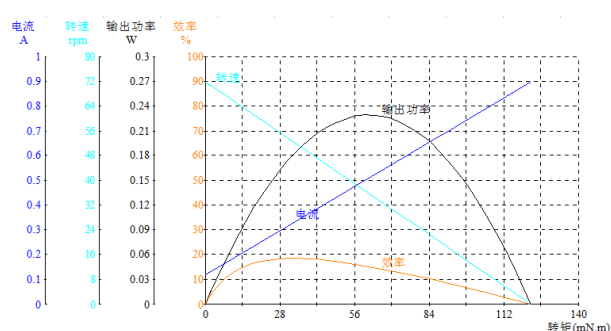
电机型号 Motor model	额定电压 Rated Volt.	空载/No load		负载/Load				堵转/Stall	
		电流 Current	转速 Speed	电流 Current	转速 Speed	扭矩 Torque	输出功率 Output power	扭矩 Torque	电流 Current
	V	A	r/min	A	r/min	kgf.cm	W	kgf.cm	A
WL-13SS0300038500-10K	3.0	0.04	784.4	0.18	619.2	0.04	0.23	0.17	0.68
WL-13SS03000312000-150K	3.0	0.12	71.9	0.32	52.9	0.33	0.18	1.25	0.90

Curve Chart :

Model: WL-13SS0300038500-10K



Model: WL-13SS03000312000-150K



Remark:

Gear Motor Torque=Driving motor torque*Reduction ratio*Gearbox efficiency;
Gear Motor Speed=Driving motor speed/Reduction ratio

Motor detailed config can be customized according to customer's requests, like voltage,speed,as well as shaft length and shape...

Welcome OEM or OWL projects

