

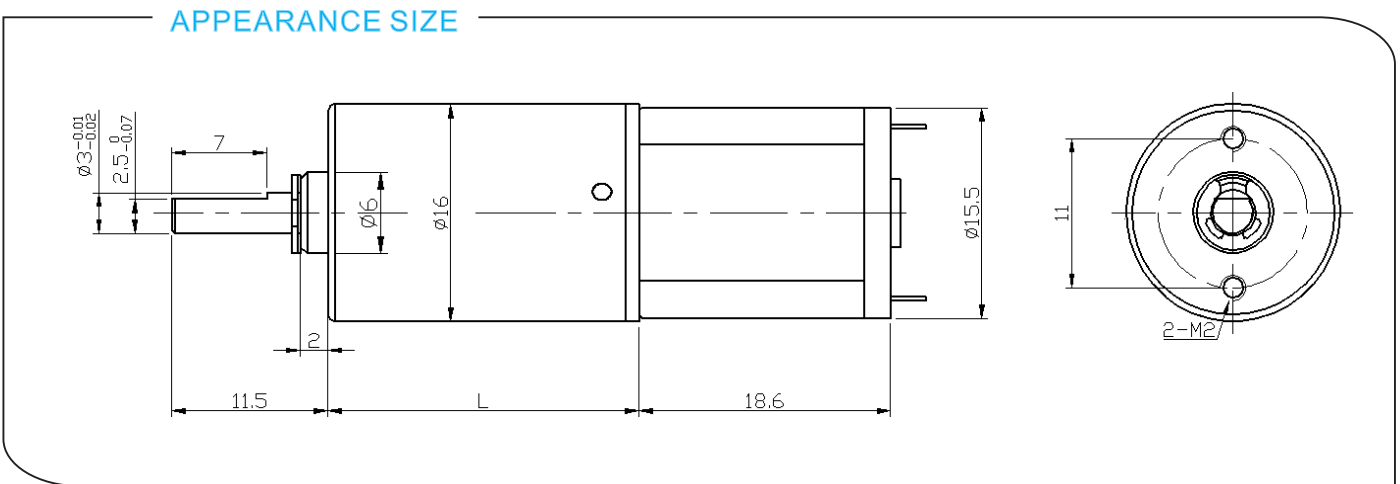
# WL-16RP030 DC PLANETARY GEAR MOTOR

基本电压/Main Voltage : 3VDC、6VDC、12VDC

典型应用/Typical Applications :

光学仪器、监控摄像机、节能、节水设备、IC水卡、玩具和礼品、办公设备、家用电器、自动化设备。

Optical instrument, Surveillance cameras, Automated energy efficiency, Water saving equipment, IC water card, Toys and gifts, Office equipment, Household appliance, automation equipment



## 减速箱参数/Gearbox Data:

级数 Number of stages	1	2	3	4	5
减速比 Reduction ratio	4、4.75	16、19、22.5	64、76 90、107	256、304、361 428、509	1024、1216、1444 1714、2036、2418
减速箱长度 Gearbox length "L" mm	12.2	15.8	19.4	23	26.6
破坏扭矩 Breaking torque(kgf.cm)	2	3	4	5	5
减速箱效率 Gearbox efficiency	90%	81%	73%	65%	59%

## 电机参数/Driving Motor Data:

电机型号 Motor model	额定电压 Rated Volt.	空载/No load		负载/Load				堵转/Stall	
		电流 Current	转速 Speed	电流 Current	转速 Speed	扭矩 Torque	输出功率 Output power	扭矩 Torque	电流 Current
		V	mA	r/min	mA	r/min	g.cm	W	g.cm
WL-030-003-8000	3	≤55	8000	≤250	6000	4	0.2	≥16	≥500
WL-030-003-10500	3	≤80	10500	≤300	7200	5	0.4	≥20	≥750
WL-030-006-8000	6	≤30	8000	≤120	5000	4	0.2	≥16	≥150
WL-030-006-10500	6	≤40	10500	≤160	7000	5	0.4	≥20	≥400

## 备注/Remark:

齿轮减速箱额定扭矩 = 电机额定扭矩 \* 减速比 \* 减速箱效率

Gear Motor Torque = Driving motor torque \* Reduction ratio \* Gearbox efficiency;

齿轮减速箱额定转速 = 电机额定转速 / 减速比

Gear Motor Speed = Driving motor speed / Reduction ratio

电机具体配置可根据客户的要求进行定制，像电压，速度，以及轴的长度和形状...

Motor detailed config can be customized according to customer's requests,

like voltage, speed, as well as shaft length and shape...

欢迎OEM或OWL项目

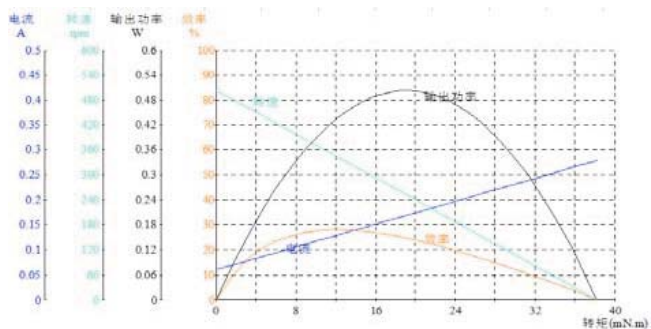
Welcome OEM or OWL projects

## 减速电机样品数据/Geared Motor Samples Data :

电机型号 Motor model	额定电压 Rated Volt.	空载/No load		负载/Load				堵转/Stall	
		电流 Current	转速 Speed	电流 Current	转速 Speed	扭矩 Torque	输出功率 Output power	扭矩 Torque	电流 Current
	V	A	r/min	A	r/min	kgf.cm	W	kgf.cm	A
DM-16RP0300039000-256K	3.0	0.12	31.9	0.29	22.2	0.80	0.18	2.6	0.70
DM-16RP03000610400-509K	6.0	0.09	14.0	0.23	8.9	1.10	0.11	3.1	0.39
DM-16RP03000610400-2418K	6.0	0.09	3.8	0.17	2.4	4.77	0.12	12.8	0.31
DM-16RP03000615500-107K	6.0	0.19	133.6	0.57	100.2	1.07	1.10	4.3	1.71
DM-16RP03001213000-304K	12.0	0.05	38.4	0.12	26.6	0.87	0.24	2.8	0.28
DM-16RP03001213000-361K	12.0	0.05	32.8	0.12	22.3	1.16	0.26	3.6	0.26
DM-16RP03001213000-428K	12.0	0.07	27.5	0.13	16.8	1.54	0.27	4.2	0.23
DM-16RP03001213500-22.5K	12.0	0.06	503.4	0.13	344.2	0.12	0.44	0.4	0.28

## 曲线图/Curve Chart :

Model: WL-16RP03001213500-22.5K



Model: WL-16RP03000610400-509K

