

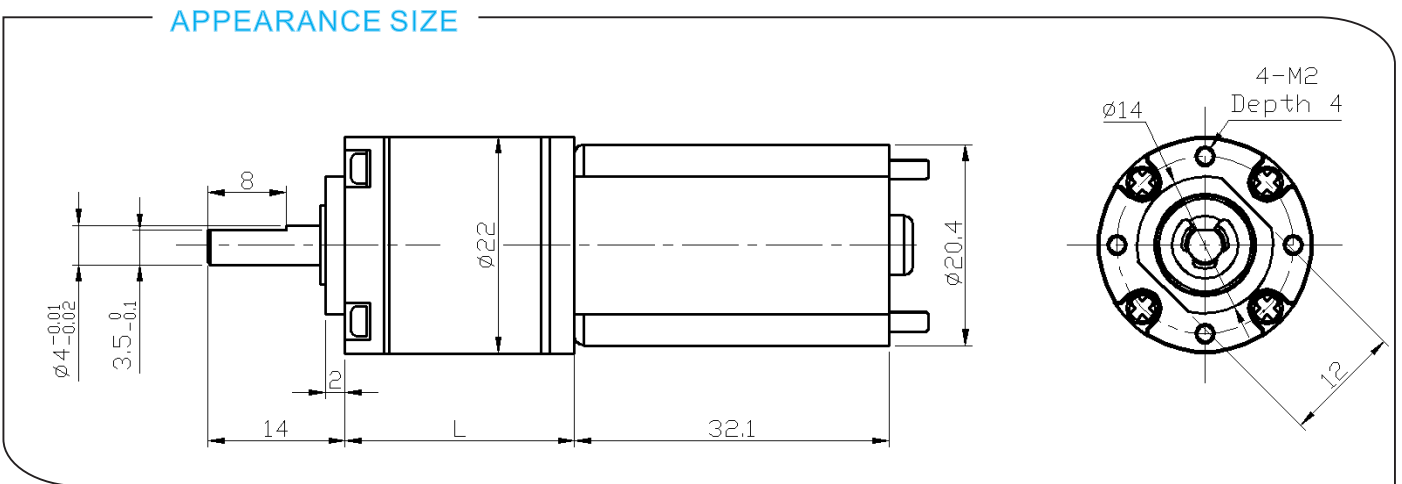
WL-22RPL180 DC PLANETARY GEAR MOTOR

基本电压/Main Voltage : 3VDC、6VDC、9VDC、12VDC

典型应用/Typical Applications :

光学仪器、监控摄像机、节能设备、节水设备、IC水卡、玩具和礼品、办公设备、家用电器、自动化设备。

Optical instrument, Surveillance cameras, Automated energy efficiency, Water saving equipment, IC water card, Toys and gifts, Office equipment, Household appliance, automation equipment



减速箱参数/Gearbox Data:

级数 Number of stages	1	2	3	4
减速比 Reduction ratio	3.5、4.8	12、17、23	43、58、79、107	150、204、276、375、509
减速箱长度 Gearbox length "L"mm	14.5	19.1	23.7	28.3
破坏扭矩 Breaking torque(kgf.cm)	4	6	8	10
减速箱效率 Gearbox efficiency	90%	81%	73%	65%

电机参数/Driving Motor Data:

电机型号 Motor model	额定电压 Rated Volt.	空载/No load		负载/Load				堵转/Stall	
		电流 Current	转速 Speed	电流 Current	转速 Speed	扭矩 Torque	输出功率 Output power	扭矩 Torque	电流 Current
		V	mA	r/min	mA	r/min	g.cm	W	g.cm
WL-180-006-6000	6	≤65	6000	≤260	5100	15	0.8	≥55	≥1150
WL-180-012-6000	12	≤27	6000	≤150	5100	15	0.8	≥55	≥430
WL-180-012-9000	12	≤80	9000	≤260	7000	20	1.4	≥80	≥1000
WL-180-024-9000	24	≤50	9000	≤150	7800	20	1.6	≥80	≥550

备注/Remark:

齿轮减速箱额定扭矩 = 电机额定扭矩 * 减速比 * 减速箱效率

Gear Motor Torque = Driving motor torque * Reduction ratio * Gearbox efficiency;

齿轮减速箱额定转速 = 电机额定转速 / 减速比

Gear Motor Speed = Driving motor speed / Reduction ratio

电机具体配置可根据客户的要求进行定制，像电压，速度，以及轴的长度和形状...

Motor detailed config can be customized according to customer's requests,

like voltage, speed, as well as shaft length and shape...

欢迎OEM或OWL项目

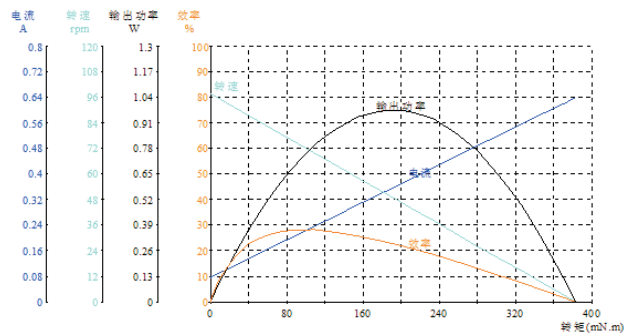
Welcome OEM or OWL projects

减速电机样品数据/Geared Motor Samples Data :

电机型号 Motor model	额定电压 Rated Volt.	空载/No load		负载/Load				堵转/Stall	
		电流 Current	转速 Speed	电流 Current	转速 Speed	扭矩 Torque	输出功率 Output power	扭矩 Torque	电流 Current
	V	A	r/min	A	r/min	kgf.cm	W	kgf.cm	A
DM-22RPL1800068000-107K	6.0	0.16	75.4	0.54	58.4	1.58	0.95	7.01	1.82
DM-22RPL1800068500-256K	6.0	0.16	31.5	0.58	24.6	3.26	0.83	15.04	2.09
DM-22RPL18000912000-107K	9.0	0.17	105.2	0.65	81.3	2.26	1.89	9.95	2.27
DM-22RPL1800126000-19K	12.0	0.05	312.5	0.15	244.2	0.23	0.59	1.07	0.51
DM-22RPL1800126000-369K	12.0	0.05	16.4	0.16	12.6	2.49	0.32	10.90	0.54
DM-22RPL1800127000-64K	12.0	0.08	97.7	0.22	72.2	1.00	0.75	3.90	0.64
DM-22RPL1800128000-4.75K	12.0	0.11	1543.4	0.32	1137.9	0.10	1.12	0.37	0.94
DM-22RPL1800128000-16K	12.0	0.09	479.0	0.29	359.0	0.33	1.21	1.31	0.90
DM-22RPL1800128000-19K	12.0	0.13	385.2	0.34	284.0	0.41	1.20	1.56	0.94
DM-22RPL1800128000-22.5K	12.0	0.11	331.6	0.33	244.0	0.49	1.22	1.85	0.96
DM-22RPL1800128000-64K	12.0	0.13	115.3	0.35	84.1	1.34	1.15	4.94	0.93
DM-22RPL1800128000-304K	12.0	0.06	25.5	0.26	20.3	5.23	1.09	25.40	1.05
DM-22RPL1800128000-509K	12.0	0.08	14.8	0.33	12.1	6.80	0.84	37.23	1.45
DM-22RPL1800247000-22.5K	24.0	0.04	278.1	0.11	193.7	0.40	0.80	1.32	0.28
DM-22RPL1800247000-256K	24.0	0.05	24.6	0.11	17.4	2.14	0.38	7.26	0.26
DM-22RPL1800249000-64K	24.0	0.07	127.0	0.20	92.0	1.48	1.40	5.38	0.55
DM-22RPL1800249000-90K	24.0	0.06	92.6	0.20	67.6	2.16	1.50	8.01	0.58
DM-22RPL1800249000-304K	24.0	0.04	28.8	0.14	22.7	5.15	1.20	24.35	0.52
DM-22RPL1800249000-509K	24.0	0.04	16.4	0.14	12.5	6.82	0.88	28.64	0.47

曲线图/Curve Chart :

Model: WL-22RPL1800127000-64K



Model: WL-22RPL1800249000-509K

