

WL-25RS310 DC SPUR GEAR MOTOR

基本电压/Main voltage : 6VDC、12VDC、24VDC

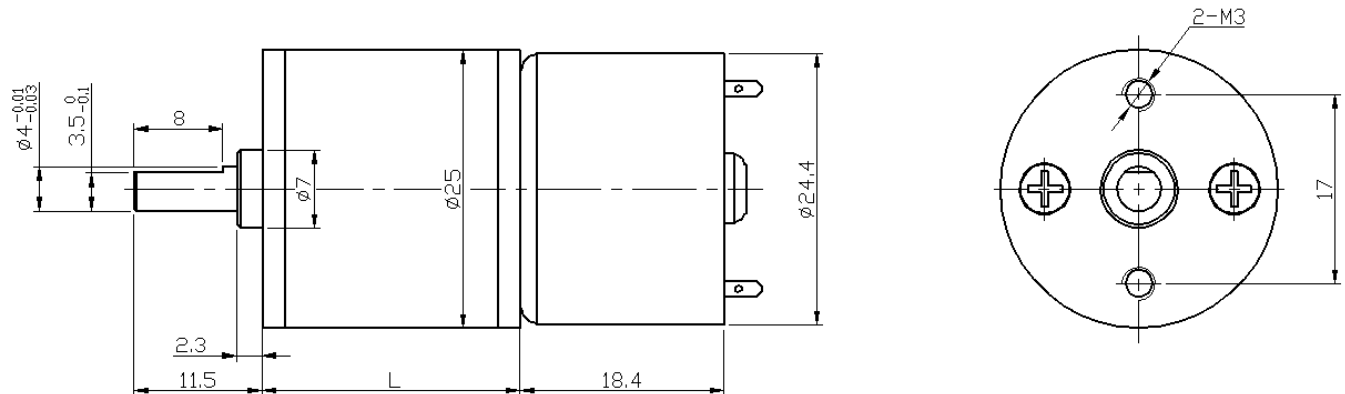
典型应用/Typical applications :

仪器仪表、电动工具、咖啡机、自动售卖机、按摩器、游戏机、
推窗器、自动化设备

Instrument, Electric tools, Coffee machine,

Vending machine, Massager, Game machine,

Electric window opener, Automation equipment



Gearbox Data :

Number of stages	4	5	6	7	8
Reduction ratio	20.4	35.8、45、50	78、99、110 122、127	217、241、268 298、331	478、531、590 656、729
Gearbox length "L"mm	20.8	23.2	25.6	28	29
Breaking torque(kgf.cm)	8	10	12	14	14
Gearbox efficiency	65%	59%	53%	48%	43%

Driving Motor Data :

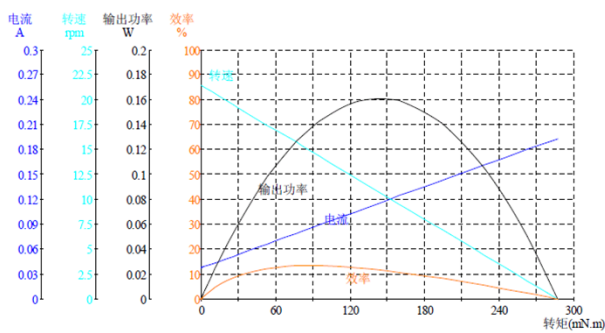
Motor model	Rated Volt.	No load		Load				Stall	
		Current	Speed	Current	Speed	Torque	Output power	Torque	Current
	V	mA	r/min	mA	r/min	gf.cm	W	gf.cm	mA
WL-310-006-3000	6	≤ 20	3000	≤ 60	2300	5	0.1	≥ 20	≥ 135
WL-310-006-4500	6	≤ 40	4500	≤ 120	3200	7	0.2	≥ 28	≥ 240
WL-310-006-6000	6	≤ 35	6000	≤ 140	4500	10	0.5	≥ 40	≥ 600
WL-310-012-3000	12	≤ 15	3000	≤ 40	2300	5	0.1	≥ 20	≥ 70
WL-310-012-4500	12	≤ 20	4500	≤ 55	3200	7	0.2	≥ 28	≥ 120
WL-310-012-6000	12	≤ 25	6000	≤ 100	4500	10	0.5	≥ 40	≥ 290

Geared Motor Data :

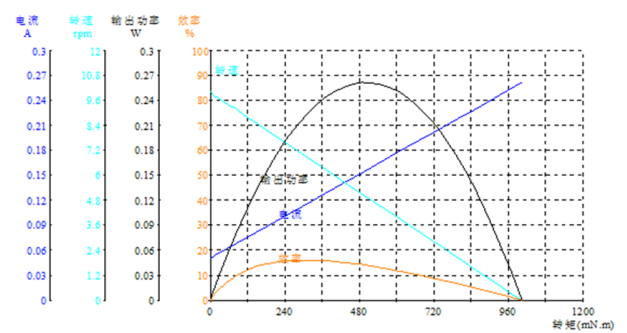
电机型号 Motor model	额定电压	空载/No load		负载/Load				堵转/Stall	
	Rated Volt.	电流 Current	转速 Speed	电流 Current	转速 Speed	扭矩 Torque	输出功率 Output power	扭矩 Torque	电流 Current
	V	A	r/min	A	r/min	kgf.cm	W	kgf.cm	A
WL-25RS3100032300-217K	3.0	0.01	9.6	0.05	7.2	0.45	0.03	1.77	0.16
WL-25RS3104.59000-478K	4.5	0.11	18.1	0.33	13.5	2.50	0.35	9.99	0.98
WL-25RS3100065200-20.4K	6.0	0.04	232.9	0.14	173.7	0.11	0.19	0.42	0.44
WL-25RS31007.56500-217K	7.5	0.06	27.6	0.19	20.2	1.29	0.27	4.86	0.56
WL-25RS3100124500-99K	12.0	0.02	40.1	0.05	28.4	0.46	0.13	1.57	0.12
WL-25RS3100126000-122K	12.0	0.03	47.9	0.11	34.6	0.79	0.28	2.82	0.29
WL-25RS3100126000-217K	12.0	0.03	25.6	0.08	18.6	0.88	0.17	3.23	0.21
WL-25RS3100126000-241K	12.0	0.04	21.4	0.09	14.3	0.97	0.14	2.93	0.19
WL-25RS3100126000-478K	12.0	0.05	10.0	0.12	6.7	3.40	0.23	10.20	0.26
WL-25RS3100127000-217K	12.0	0.03	30.6	0.11	23.1	1.15	0.27	4.72	0.35
WL-25RS3100129200-20.4K	12.0	0.04	434.0	0.17	336.6	0.17	0.58	0.75	0.59
WL-25RS3100129200-50K	12.0	0.04	182.6	0.15	142.7	0.40	0.58	1.81	0.56
WL-25RS3100129200-122K	12.0	0.03	71.2	0.14	57.3	0.64	0.38	3.28	0.58
WL-25RS3100248000-331K	24.0	0.03	22.4	0.09	15.5	2.10	0.33	6.81	0.21

Curve Chart :

Model: WL-25RS3100126000-241K



Model: WL-25RS3100126000-478K



Remark:

**Gear Motor Torque=Driving motor torque*Reduction ratio*Gearbox efficiency;
Gear Motor Speed=Driving motor speed/Reduction ratio**

**Motor detailed config can be customized according to customer's requests,
like voltage,speed,as well as shaft length and shape...**

Welcome OEM or OWL projects