

WL-30RS395 DC SPUR GEAR MOTOR

基本电压/Main voltage :12VDC、24VDC

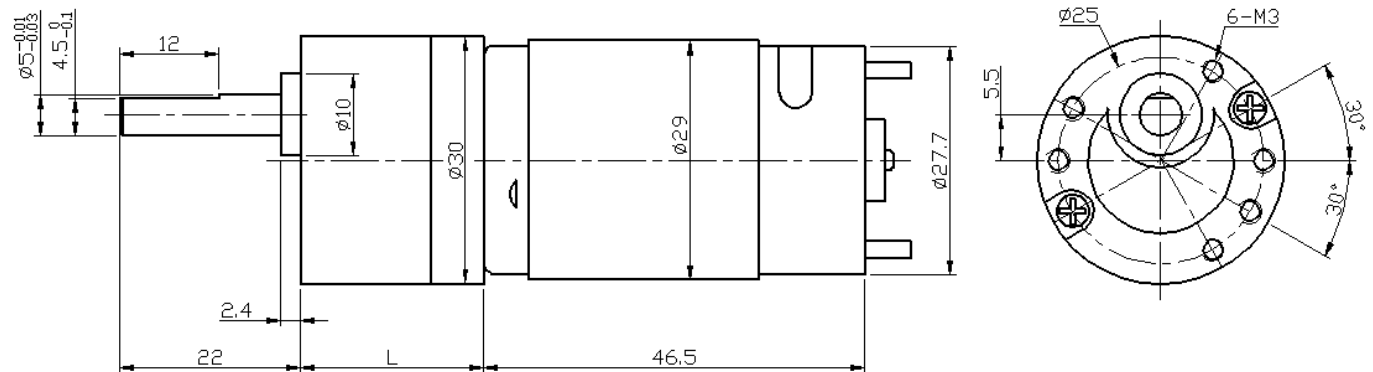
典型应用/Typical applications :

仪器仪表、电动工具、咖啡机、自动售卖机、按摩器、游戏机、
推窗器、自动化设备

Instrument, Electric tools, Coffee machine,

Vending machine, Massager, Game machine,

Electric window opener, Automation equipment



Gearbox Data :

Number of stages	4	5	6	7	8
Reduction ratio	37	88、114、131	206、265、305 341、392、450	619、711、796 914、1049、1548	1857、2132 2387、2447
Gearbox length "L"mm	22.2	24.8	27.4	30	32.6
Breaking torque(kgf.cm)	10	12	16	20	20
Gearbox efficiency	65%	59%	53%	48%	43%

Driving Motor Data :

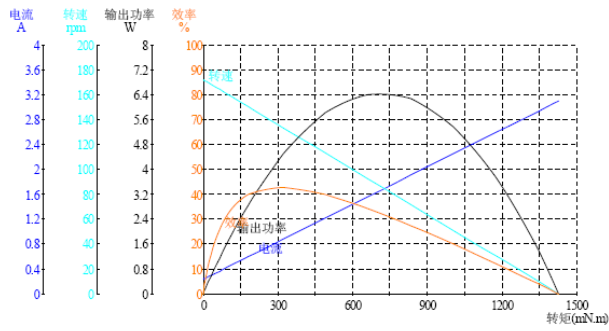
Motor model	Rated Volt.	No load		Load				Stall	
		Current	Speed	Current	Speed	Torque	Output power	Torque	Current
	V	mA	r/min	mA	r/min	gf.cm	W	gf.cm	mA
WL-395-012-3000	12	≤60	3000	≤250	2200	65	1.5	≥208	≥740
WL-395-012-4500	12	≤90	4500	≤430	3300	80	2.7	≥410	≥1700
WL-395-012-6000	12	≤130	6000	≤750	4800	100	4.9	≥510	≥2800
WL-395-024-3000	24	≤40	3000	≤120	2200	65	1.5	≥220	≥380
WL-395-024-4500	24	≤60	4500	≤220	3300	80	2.7	≥360	≥820
WL-395-024-6000	24	≤80	6000	≤380	4800	100	4.9	≥580	≥1700

Geared Motor Samples Data :

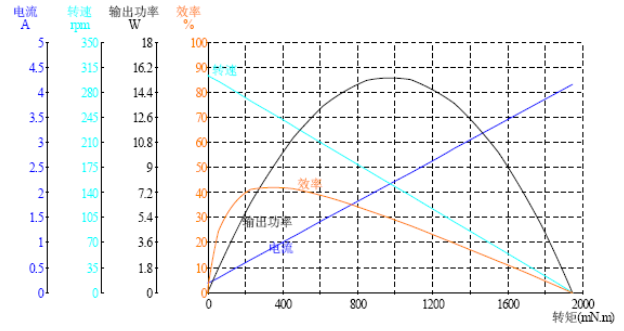
电机型号 Motor model	额定电压	空载/No load		负载/Load				堵转/Stall	
	Rated Volt.	电流 Current	转速 Speed	电流 Current	转速 Speed	扭矩 Torque	输出功率 Output power	扭矩 Torque	电流 Current
	V	A	r/min	A	r/min	kgf.cm	W	kgf.cm	A
WL-30RS3950123000-88K	12.0	0.05	34.3	0.20	27.5	2.8	0.78	13.9	0.83
WL-30RS3950126500-36.7K	12.0	0.23	172.2	0.87	133.7	3.3	4.47	14.5	3.10
WL-30RS39501212000-20K	12.0	0.34	595.8	1.56	494.9	1.7	8.53	9.9	7.54
WL-30RS3950246000-88K	24.0	0.11	68.4	0.41	54.3	6.4	3.54	30.8	1.59
WL-30RS39502411000-36.7K	24.0	0.18	303.8	0.95	245.4	3.8	9.63	19.9	4.16

Curve Chart :

Model: WL-30RS3950126500-36.7K



Model: WL-30RS39502411000-36.7K



Remark:

**Gear Motor Torque=Driving motor torque*Reduction ratio*Gearbox efficiency;
Gear Motor Speed=Driving motor speed/Reduction ratio**

**Motor detailed config can be customized according to customer's requests,
like voltage,speed,as well as shaft length and shape...**

Welcome OEM or OWL projects