

# WL-310 MICRO DC MOTOR

基本电压/Main Voltage : 6VDC、12VDC、24VDC

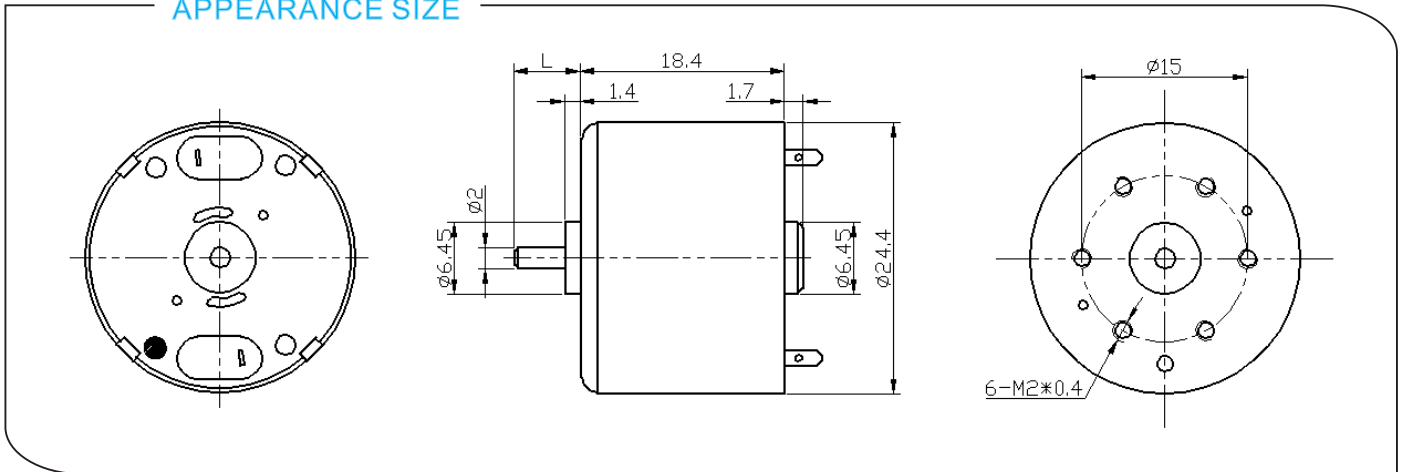
典型应用/Typical Applications :

按摩设备、电动玩具、家用电器、电子锁、照相机、CD/DVD播放器、电动剃须刀、自动化产品。

Massage equipments, electronic toys, home appliances, electronic lock, camera, CD/DVD player, electric razor, automatic products.



## APPEARANCE SIZE

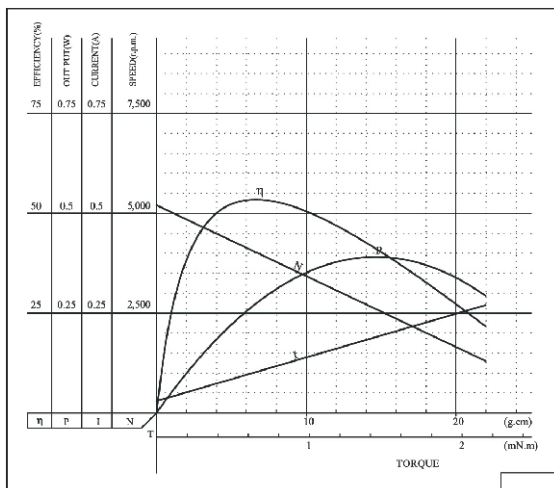


## 电机参数/ Motor Data :

型号 Model	电压/Voltage		空载/No load		负载/Load				堵转/Stall	
	电压范围 Operating range	工作电压 Normal	电流 Current	转速 Speed	电流 Current	转速 Speed	扭力 Torque	功率 Output	扭力 Torque	电流 Current
	V	V	mA	r/min	mA	r/min	g.cm	W	g.cm	mA
WL-310TA-11400	1.0-6.0	5.0	30	5200	79	4400	4.5	0.20	29.3	350
WL-310TA-07730	9.0-15.0	12.0	10	3300	30	2400	6.7	0.17	24.5	83

## 曲线图/ Curve Chart :

MODEL: WL-310TA-11400



MODEL: WL-310TA-07730

